

Uncle Dan would like you to change the color of his bowling ball in a picture he has. Which selection tool would be the best one for this task?

- A. Rectangular Marquee Tool
- B. Elliptical Marquee Tool
- C. Single Row Marquee Tool
- D. Single Column Marquee Tool

Which tool is used to resize, move or rotate image?

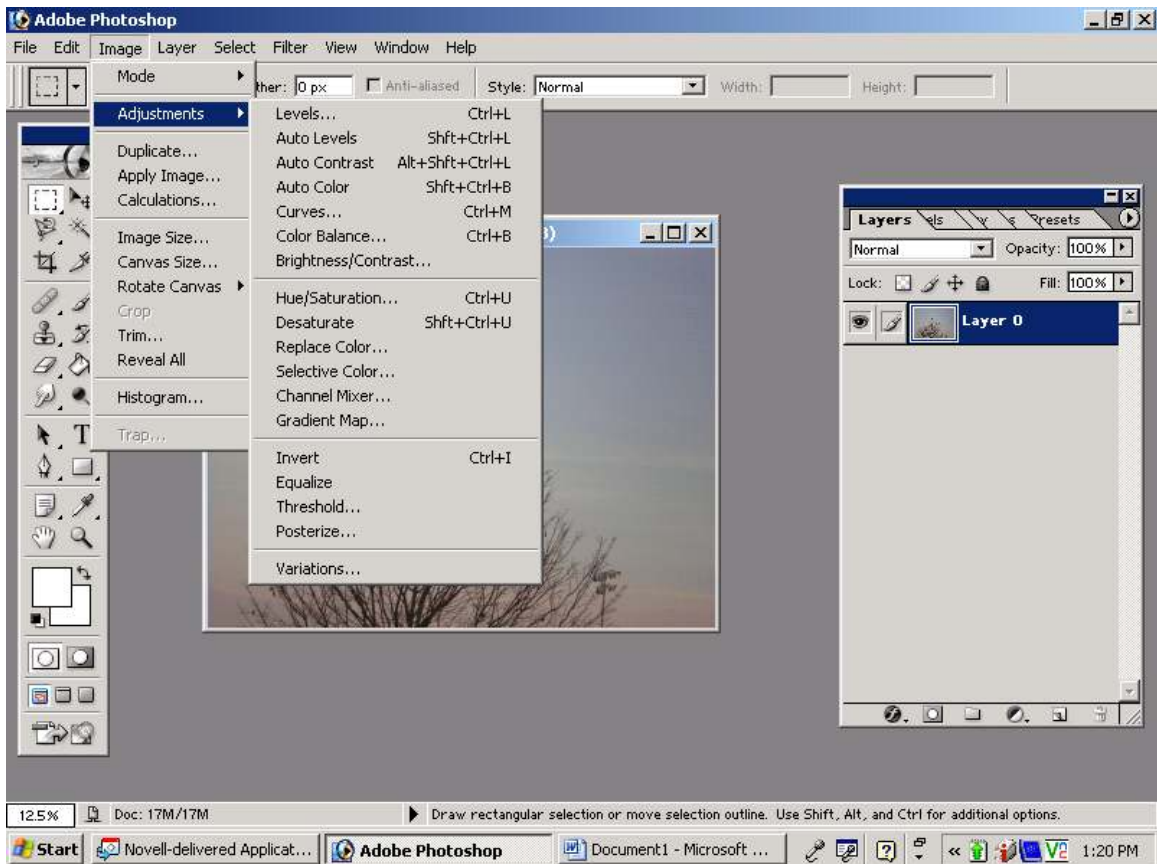
- A) the move tool
- B) the lasso tool
- C) free transform
- D) the crop tool

Which of the following methods is NOT an acceptable way to get imagery to use for your original art?

- A) Do a google search and save pictures.
- B) Take photographs
- C) Use traditional studio materials
- D) Use the paintbrush or other digital tools to create images or patterns

If I use a “free-use” or “copyright free” image, How much of the original work can remain and it still be considered “my art”?

- a. 5%
- b. 15%
- c. 30%
- d. 50%
- e. 75%



Which option in the currently visible drop down menu could be used to change the image into a black and white image?

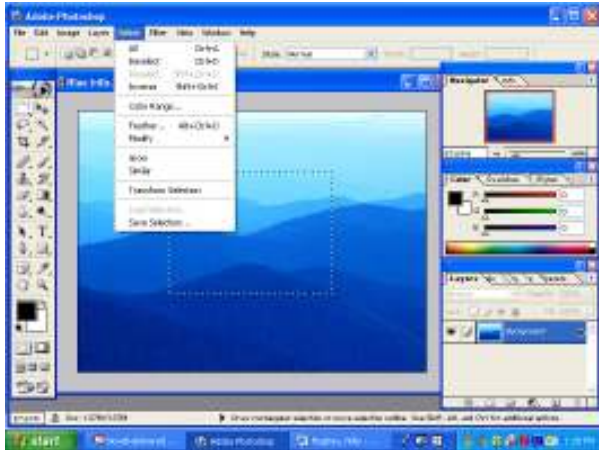
- A. Invert
- B. Curves
- C. Desaturate
- D. Channel Mixer

By applying \_\_\_\_\_ you can make a photograph look as if it were a painting or even a sketch.

- A. Text
- B. Eyedropper tool
- C. Paint Bucket
- D. Filters

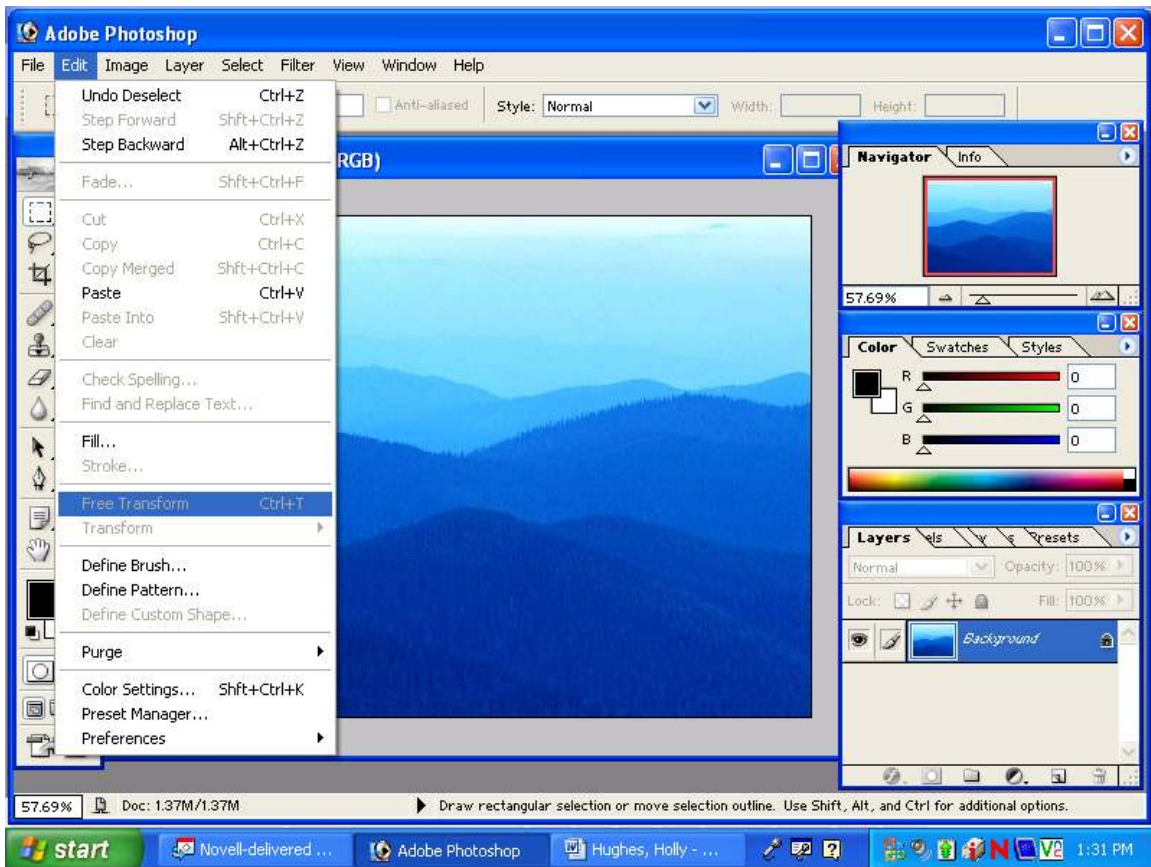
In order to make this picture fit into the window so that you don't have to scroll to see the whole thing, which tool would you double click on?

- A. Rectangle tool
- B. Notes Tool
- C. Hand Tool
- D. Zoom tool



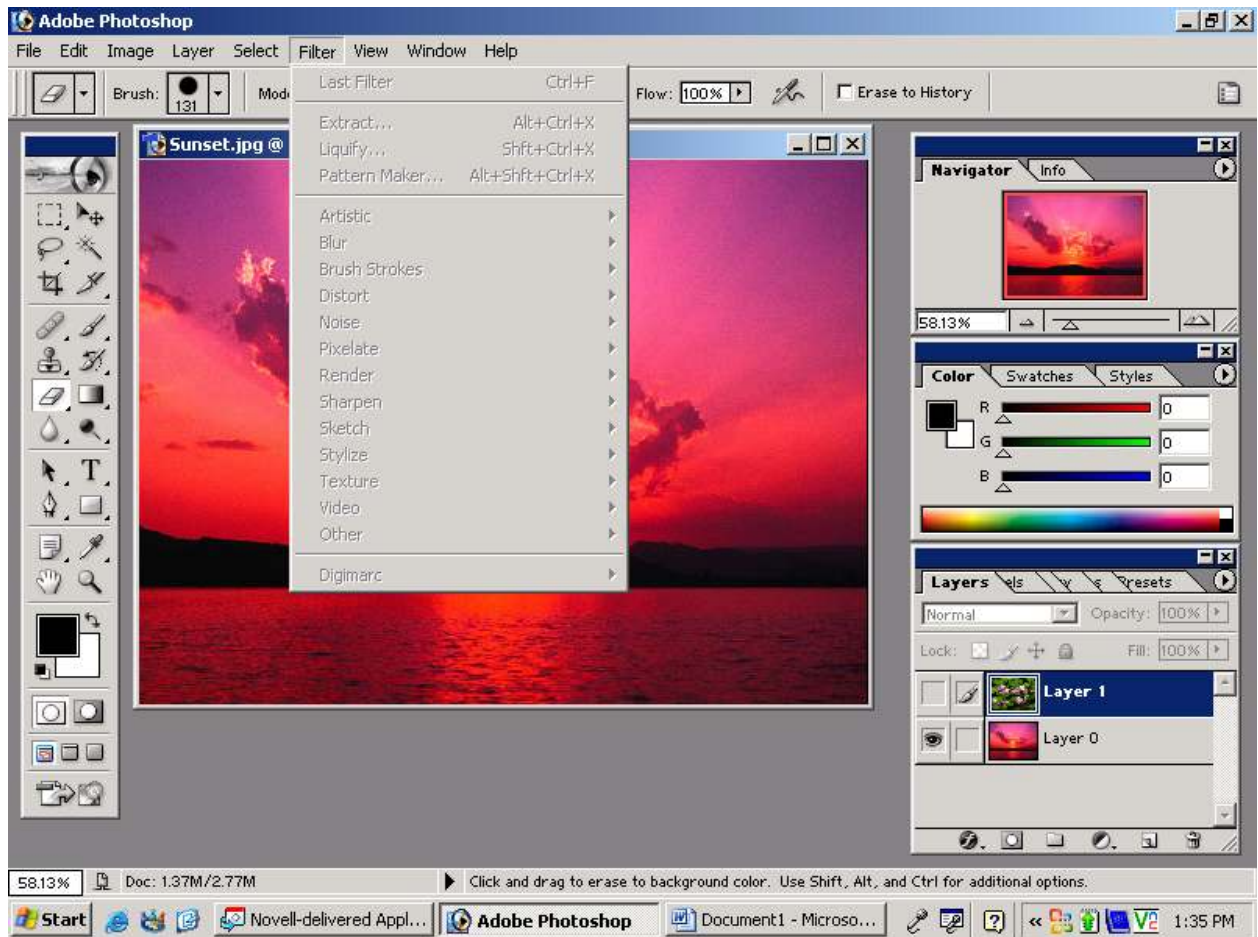
To select everything outside of your current selection, you would choose \_\_\_\_\_ under the selection menu:

- A. Deselect
- B. Color Range
- C. Transform Selection
- D. Inverse



Photoshop will not let me use the Free Transform tool because:

- A. The window that the picture is in is not the active window
- B. The layer that the picture is in is not unlocked
- C. I didn't double click the lasso tool
- D. I do not have the layer set on visible



I am trying to filter layer 1 and it won't let me. Why is this?

- A. Layer 1 is not the active layer
- B. Layer 1 is hidden
- C. The eraser tool is selected instead of the move tool
- D. Layer 1 does not have a layer mask

Most digital images are made up of \_\_\_\_\_?  
(an exception to this rule would be a vector graphic)

- A. Paint dots
- B. Pixels
- C. Printer ink
- D. Colored shapes

Color is carried on waves of \_\_\_\_\_?

- a. sound
- b. light
- c. water
- d. Color is not carried on waves.

To Free Transform an image with skewing it you need to hold down what key on the keyboard when Free Transforming?

- A. Ctrl
- B. Alt
- C. Enter
- D. Shift

The setting on a digital camera that allows for extreme detail is called?

- A. micro
- B. macro
- C. portrait
- D. landscape

To Free Transform an image without skewing it you need to hold down what key on the keyboard while performing the Free Transform?

- A. Ctrl
- B. Alt
- C. Enter
- D. Shift